



SAANICH
neighbourhood place



2022-23
ANNUAL REPORT

LAND ACKNOWLEDGEMENT

Saanich Neighbourhood Place is located on the traditional territories of the Lkwungen-speaking peoples, represented by the Esquimalt and Songhees Nations, and the W̱SÁNEĆ peoples represented by the W̱JOLEŁP (Tsartlip), BOKÉĆEN (Pauquachin), STÁUTW (Tsawout), W̱SIKEM (Tseycum) and MÁLEXEŁ (Malahat) Nations. We are privileged to be able to live, play and work on these lands we all call home.

We acknowledge that acts of colonization have created enduring inequities for the Indigenous peoples who have long historical relationships to the lands and territories. Despite the impacts of colonizations, Indigenous peoples continue to have vibrant communities and cultures.

As a family-serving organization, we recognize that we have a responsibility to continue our work towards truth and reconciliation, and are committed to being inclusive, accessible and welcoming to all visitors, and to work together with our partners to build resilient families and strong communities.



TABLE OF CONTENTS

- FROM OUR BOARD CHAIR
- EXECUTIVE DIRECTOR'S MESSAGE
- TREASURER'S REPORT
- OUR BOARD OF DIRECTORS
- OUR MISSION, VALUES & MANDATE
- CHILDCARE PROGRAMS
- FAMILY SERVICES
- PROGRAM FACTS & FIGURES
- OUR STAFF & VOLUNTEERS
- OUR DONORS & COMMUNITY PARTNERS
- FINANCIAL STATEMENTS



A MESSAGE FROM OUR BOARD CHAIR

This has been another great year for Saanich Neighbourhood Place. There are so many things that the staff and volunteers have been working on this year to continue to strive for excellence in our field. From our Family Resource Programs, CAP C programming, licensed child care and preschool programs, and everything in between, Saanich Neighbourhood Place is the place to be.

The high caliber staff and volunteers are all pillars of the community and I am so proud to have been the chair of the board for this organization this year. I have had the amazing privilege of being on the board for Saanich Neighbourhood Place for the past 25 years and it is now time for me to “retire”. I have seen so many changes over the years and from the small staff of 3 and me as a volunteer to what it is today has been rewarding to witness.

Opening a child care centre was a dream for the board for so long and I was thrilled to be able to see it come to fruition. I know first hand the amazing work that the staff and volunteers have done and continue to do at Saanich Neighbourhood Place and I am confident it will continue to thrive.

I won't say goodbye, but rather thank you for the experiences and memories and we'll see each other again.

Most Sincerely,
Erin Holler
SNP Board Chair





A MESSAGE FROM OUR EXECUTIVE DIRECTOR

Well, here we are, another year whizzed by already!

The spring months of 2022 saw our 'Little Woods' outdoor play area approved so the staff and children were able to enjoy the outdoors just steps from their classrooms. In June, we hosted a Family Barbeque, serving more than 250 folks in the parking lot of the Child and Family Centre. August marked the first anniversary of the CFC, and in September we supported a number of our staff to start working on their Early Childhood Educator Diploma. In October, we shifted programs from the Broadview United location to our Pearkes/CFC spaces, and we look forward to reopening there in fall 2023! As December rolled around, we were able to pass along savings to our childcare families through our participation in the Child Care Fee Reduction Initiative. The new year started off with an all-staff retreat, time to learn together away from work. As our year wound down, we were sad to close the doors at the Royal Oak Neighbourhood House, but the search for new space in the region is ongoing!

Its been a year for gathering information, and our staff have contributed to our strategic planning, completed an organizational survey, and also a survey to assess our practices around equity as an employer. End results? We've learned where we can improve, and learned what we're doing well. Our team has grown rapidly in the past year, but we also have a handful of staff who've been here awhile. Notable anniversaries include Moira, who has been at SNP for 15 years, and Emma, who has been part of the team for 10 years. Another notable date is that Full o'Beans Preschool will celebrate its 10th opening day this September 2023.

Our fundraising focus has been on building a strong donor base, working with Canada Helps campaigns to ask folks to consider making us a 'set and forget' recipient. While this work continues, we have also been fortunate to receive donations from groups we've not worked with before – Santa's Anonymous, Western Coast Insurance, Victoria Harbourside Rotary and St. Johns Order – to name a few. With the help of these folks, we worked to raise funds to address increasing food costs for our programs and upgrade our aging kitchen. As always, we are grateful to have the support of many in the community who help with money, time and resources.

Our Board of Directors and Management team have been working on our new strategic plan, important work that outlines the vision for how SNP will work in the coming years, with what we know now, and also what we think will become priorities in the next few years. Staff and community engagement in this process helps inform the project, and we look forward to sharing the updated plan at the AGM.

As always, I am grateful to be working with the dedicated, hard-working, committed people who make up the staff and Board of SNP. I look forward to another year of challenges, snuffles and rough patches and I am confident there will be even more accomplishments, laughs and high points for all of us.

With gratitude, Corinne

TREASURER'S REPORT



As a Partner at Schibli Stedman King LLP, a Victoria based accounting firm, I have worked with various local businesses and non-profits over the past 10 years, and been the Treasurer on the SNP Board of Directors for most of the past year. From this perspective, I can confidently report that during the 2022-2023 fiscal year SNP has been steadily recovering from the post-Covid era.

Like many businesses and not-for-profits, SNP has experienced a year of change. Leading the change and recovery process has been Corinne and her excellent management and frontline team. They have faced all struggles with due diligence, a strong work ethic, and an open mind. This has allowed for SNP to thrive and provide excellent support to the Saanich community.

From a financial perspective, SNP enrollment has reached its goals and pre-pandemic level. With the change in sick policies and staffing difficulties, this is a tremendous achievement that has allowed SNP to be in an excellent financial position going forward. The SNP team continues to qualify for existing government funding and search for new funding to maintain and provide vital services for the Saanich area. SNP continues to provide competitive salaries to ensure the quality of staff is well compensated for the excellent services they deliver.

In conclusion, SNP has faced the post-pandemic economy with success and is in strong financial position to provide services for the Saanich area in years to come.

Denton Grose, CPA, CGA





Board of Directors 2022-2023




SAANICH NEIGHBOURHOOD PLACE IS GOVERNED BY A VOLUNTEER BOARD OF DIRECTORS, A GROUP OF COMMUNITY MEMBERS WHO ARE DEDICATED TO SUPPORTING THE WORK OF THE ORGANIZATION AND REPRESENTING SNP IN THE COMMUNITY TO BENEFIT THE FAMILIES, YOUTH AND CHILDREN WE SERVE. NEW MEMBERS ARE ALWAYS WELCOME!



**ERIN HOLLER - CHAIR (OUTGOING)
MARIAN DEMONYE - VICE CHAIR
DENTON GROSE - TREASURER
VACANT - SECRETARY
DONNA-LYNN THORPE- DIRECTOR
DOTAN AMIT- DIRECTOR
NICHOLAS MCKNIGHT - DIRECTOR
BARBARA DORRINGTON - DIRECTOR
KIM MORRIS - DIRECTOR
FIONA FUNG - DIRECTOR
VACANT - DIRECTOR**

OUR BOARD OF DIRECTORS HAS A MAXIMUM OF 11 MEMBERS. IF YOU WOULD LIKE TO PARTICIPATE IN THE WORK OF SNP AS A BOARD MEMBER, PLEASE CONTACT ED@SNPLACE.ORG FOR MORE INFORMATION



OUR MISSION, VALUES & MANDATE

OUR MISSION:

TO ENRICH LIVES THROUGH
CARING PROGRAMS THAT
CONNECT PEOPLE TO EACH
OTHER AND THEIR
COMMUNITY

OUR VALUES:

ACCESSIBLE,
INCLUSIVE,
DIVERSE,
COLLABORATIVE,
RESPECTFUL,
COMPASSIONATE,

OUR MANDATE:

TO PROVIDE SERVICES TO FAMILIES
TO RESPOND TO THE NEEDS OF THE
COMMUNITIES WE SERVE
TO PROVIDE COMMUNITY
LEADERSHIP
TO BE INNOVATIVE IN OUR SECTOR



CHILDCARE PROGRAMS



BEANSPROUTS & FULL O' BEANS CHILD CARE

The 2022/2023 year was a busy one for our full-time childcare team. We welcomed new educators and families in spring of 2022 and entered the summer months in full swing. Winter of 2023 provided us with recruitment challenges but with a little perseverance we were able to find wonderful educators to join our team. Experiencing all four seasons along side the children in our outdoor space was a humbling and joyful opportunity. The children have come to know the trees and wildlife that visit them regularly, giving them names and showing them endless amounts of love. The inclusion of lunch and snacks in our full-time childcare program continues to be a highlight and greatly appreciated by families. With “tex-mex” pasta and banana crumb muffins quickly becoming classroom favorites.



FULL O'BEANS PRESCHOOL

Full o' Beans Preschool continued to provide part time preschool opportunities for families in our community. We saw 101 children come through our preschool program in the 2022/ 2023 year. A big focus of this program is the development of children's social and emotional well being and connecting with the natural world. Both of our preschool programs love to take advantage of our close proximity to Cuthbert Holmes Park as well as the Salmon in The City program. As the landscape of part time Preschool programs change within the regain, we look forward to continuing to offer a supportive and inclusive environment for children and family to connect with each other and grow together.

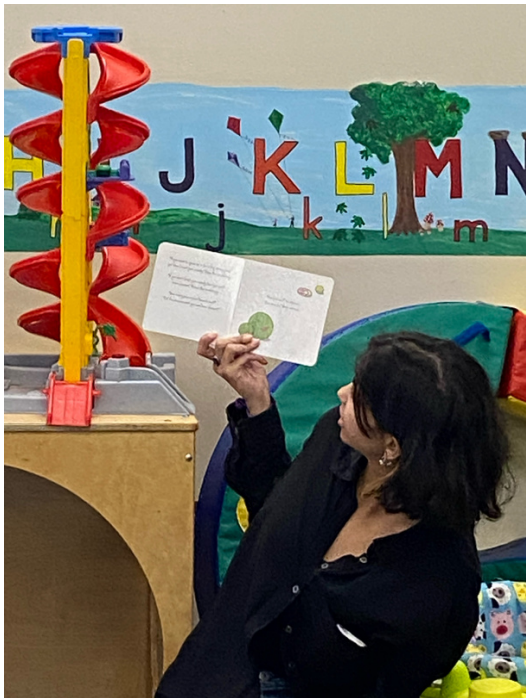
“

The staff at SNP are amazing -my child loves to come and see her teachers each morning, and play with other kids.

-Childcare Parent

”





FAMILY SERVICES

EARLY YEARS PROGRAMS

Early years programs are an important focus for Saanich Neighbourhood Place. 2022-23 saw a large increase in the number of programs offered, as we fully opened all programs in person and resumed a regular schedule of drop in playgroups, Parent Child Mother Goose and Kindergym.

After five years of growth, our lease for Royal Oak Neighbourhood House was not renewed. The last day of operation for RONH was March 31, 2023. Despite our best efforts, we were unable to secure a new space in the Royal Oak neighbourhood, but we continue to be on the lookout for a space that will allow us to return to service provision in that corner of Saanich.

We were able to add a new Toddlergym program in the Child and Family Centre, and this Friday morning program has proven to be very popular for parents with 2 and unders, and provides a smooth transition from our Baby Group program to our other Early Years programming.



“

(Programs) give me and my child a safe place to explore, learn and feel validated.

-Drop In program parent

”

FAMILY/YOUTH PROGRAMS & SUPPORT/OUTREACH

The Family Services Team has had a busy year as we transitioned back to a full calendar of programs and regular service provision. The post covid period has brought new challenges for our community and increased need for the services provided by the Family Support and Outreach Workers.

Youth outreach has been very busy, at times with a lengthy waitlist. In addition to work with individuals, we also worked with other community groups like the Saanich Police Community Services team and Saanich Recreation to offer programs for youth in school. Partnerships have proven to be an effective way to make the most of the time we have available for this work.

New program initiatives, including a parenting program offered weekly to incarcerated dads at the Vancouver Island Regional Correctional Centre, as well as a mental wellbeing program for mothers called Empowering Moms, have quickly reached capacity.



“

On the days you think you can't get through it, they (SNP staff) are always there with a smile and a kind word. Sometimes they offer information and support, sometimes just a shoulder to cry on and I am so glad this resource is available. My life and my child's life would have be so much more difficult without SNP.

-Family Support Participant

”



FOOD EQUITY

Food Equity programs have seen a large increase in demand over the past year. Always popular programs, the need for food assistance has grown dramatically in our community as housing and other costs increased, and food prices continue to rise.

We have been able to address some needs through increased capacity to store fresh food for distribution, and now have two small fridges in each building to keep perishable items fresh for as long as possible, reducing food spoilage. Traffic to these fridges has increased as well, with many community members coming to access food assistance in a safe way.

Seniors are the fastest growing group who are seeking food security assistance, causing us to begin to discuss how we might better collaborate with other services to address this growing need.

With the support of Island Health, we were able to add an additional Family Take Out Entrée night on Mondays, which allowed us to begin to address the very long waitlist for Wednesday Family Dinner participation. In 2022-23, 3298 meals were served to families through our Family Dinner and Take Out Entrée programs, with an additional 363 meals provided through our Community Kitchen programs.

We continue to work with community partners to try to address the broader issue of Food Equity, through participation in roundtables, educational opportunities, and participation in shared community events.

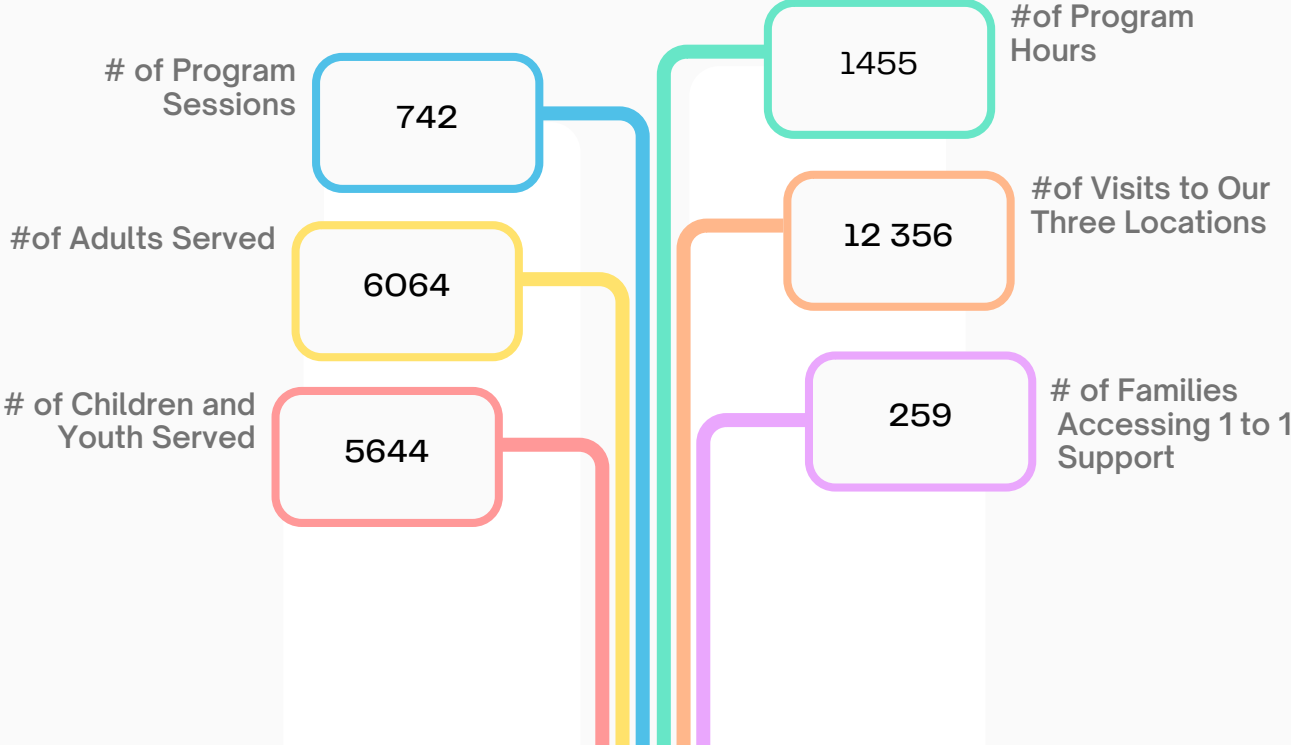
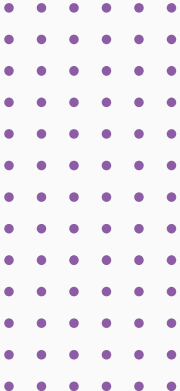


Thanks so much for the amazing meals from the Family Dinner program! My kids love the food and it is always healthy and delicious - it makes a big difference to our family.

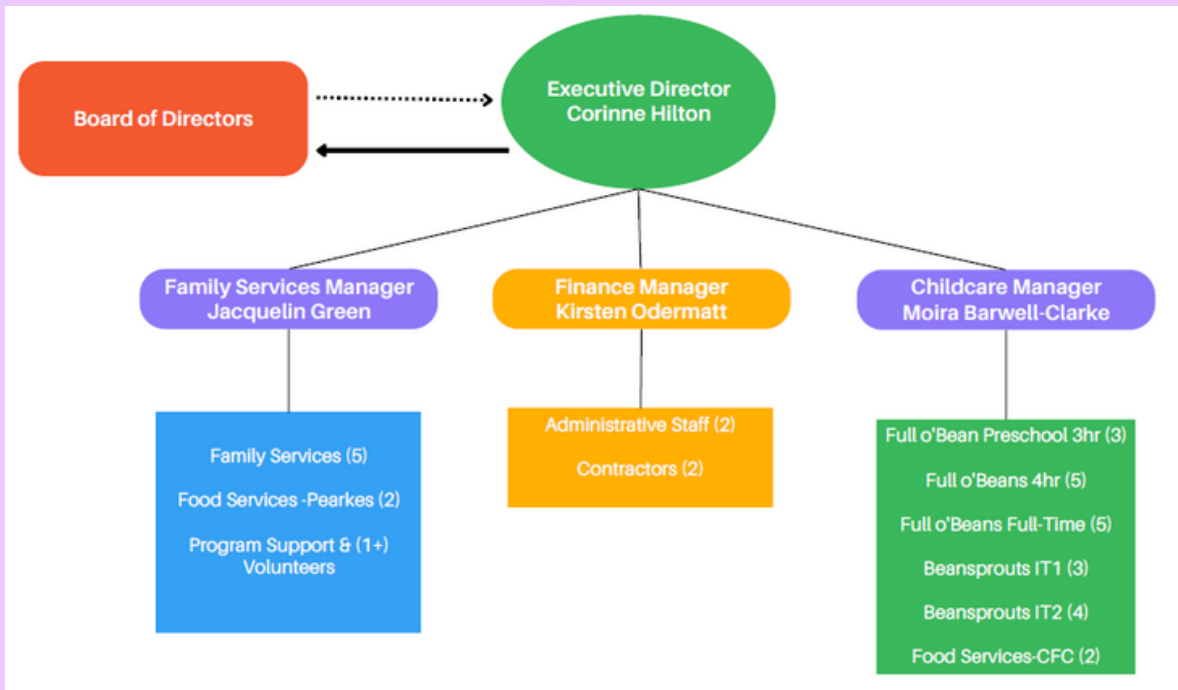
-Family Dinner Participant



FAMILY SERVICES BY THE NUMBERS 2022-23



Saanich Neighbourhood Place



OUR STAFF

● ADMIN

*Corinne Hiilton *Kirsten Odermatt
*Kumi Tanner * *Fiona Clement
*Kayla Gruntman *Brooke
Wheeler

● FAMILY SERVICES

*Jacquelin Green *Vanessa Hamilton
*Robin Kiernan *Tanya Kulikowsky
*Michaela Louie *Paul Sheaves *Ali
Wight

● FULL O'BEANS & BEANSPROUTS

*Moira Barwell Clarke *Wendy Morgan *Emma Stebbins * Sasha Gardiner-
Collins *Christine Morris *Lynn Spyker *Mackenzie Doherty *Aziza Sealy-
Qaylow *Rhiannon Turner *Rhiannon McKechnie *Emily Green *Sarah Poole
*Celine Eckert *Brianna Sheppard-Murphy *Marie Draper *Melanie McCauley
*Jessica He *Joanna Jhuo *Meiyi Wei *Kuljeet Saroe *Zyann Lewis *Michelle
Kennedy *Jen Woodrow *Lorie Walker *Audra Teitzmann

● CONTRACTORS

*Valerie Williams -Communications
Consultant
*Mike Almond - Maintenance

● FOOD SERVICES

*Tina Tulloch * Ariane Vezeau
* Crystal Meloche

● PROGRAM SUPPORT

*Carol Pesce * Madeline Johnstone * Olivia Dawson *Shaza Bekbashi *Cara
Jackson *Rachel Green Enkel *Evelinne Medina *Kayla Kines *MaryAnn
Mundiz *Stefania Pisaryk



“ EVERY STAFF MEMBER IS ABSOLUTELY
FABULOUS, WELCOMING, HELPFUL AND
UNDERSTANDING

”
-SURVEY RESPONDENT

OUR VOLUNTEERS



“

Volunteering gives me the opportunity to give back - that's important!

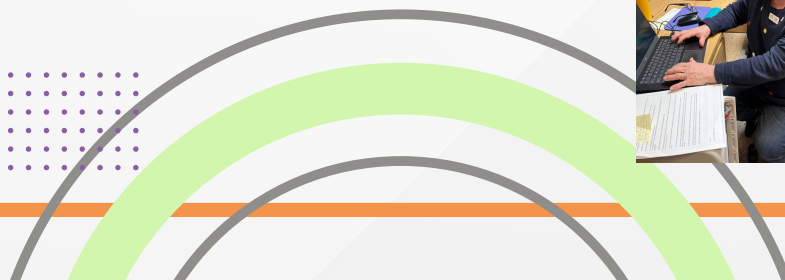
From an SNP volunteer

”

Volunteers offer their time and energy to support our programs in a variety of ways, from picking up bread donation to preparing family meals and everything in between. We are grateful for the assistance of these folks during our year:

Angela Adamek
Ashlee Pilon
Darren Anderson
Donna Patterson
Gary John Smith
Kim Morris
Liliana Flores

Marla Brownhill
Paul Pantaleo
Renee Steeg
Taryn Krizan
Terry Guise
Colleen Sullivan



We are grateful for the support of the following, whose financial and other contributions allow us to serve our community

Our spaces are provided at low or no cost by:



Broad View
— UNITED —

Programs and services are supported by:



United Way
OF GREATER VICTORIA



PARKER JOHNSTON

Royal Oak Women's Institute



Kiwanis
CLUB OF OAK BAY

SOVERIGN ORDER OF ST JOHN OF JERUSALEM
KNIGHTS HOSPITALLER

Cupe 2011


... and by the many individuals and families who donate money, time, or resources to support our work each year.

Food Equity Programs were also sponsored by:





 **3100/3120 Tillicum Road Victoria V9A 6T2**

 **250-360-1148**

 **admin@snplace.org**

 **www.snplace.org**